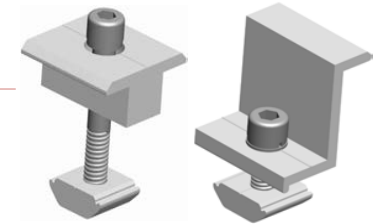
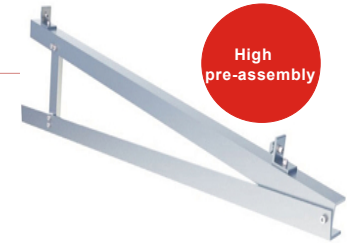
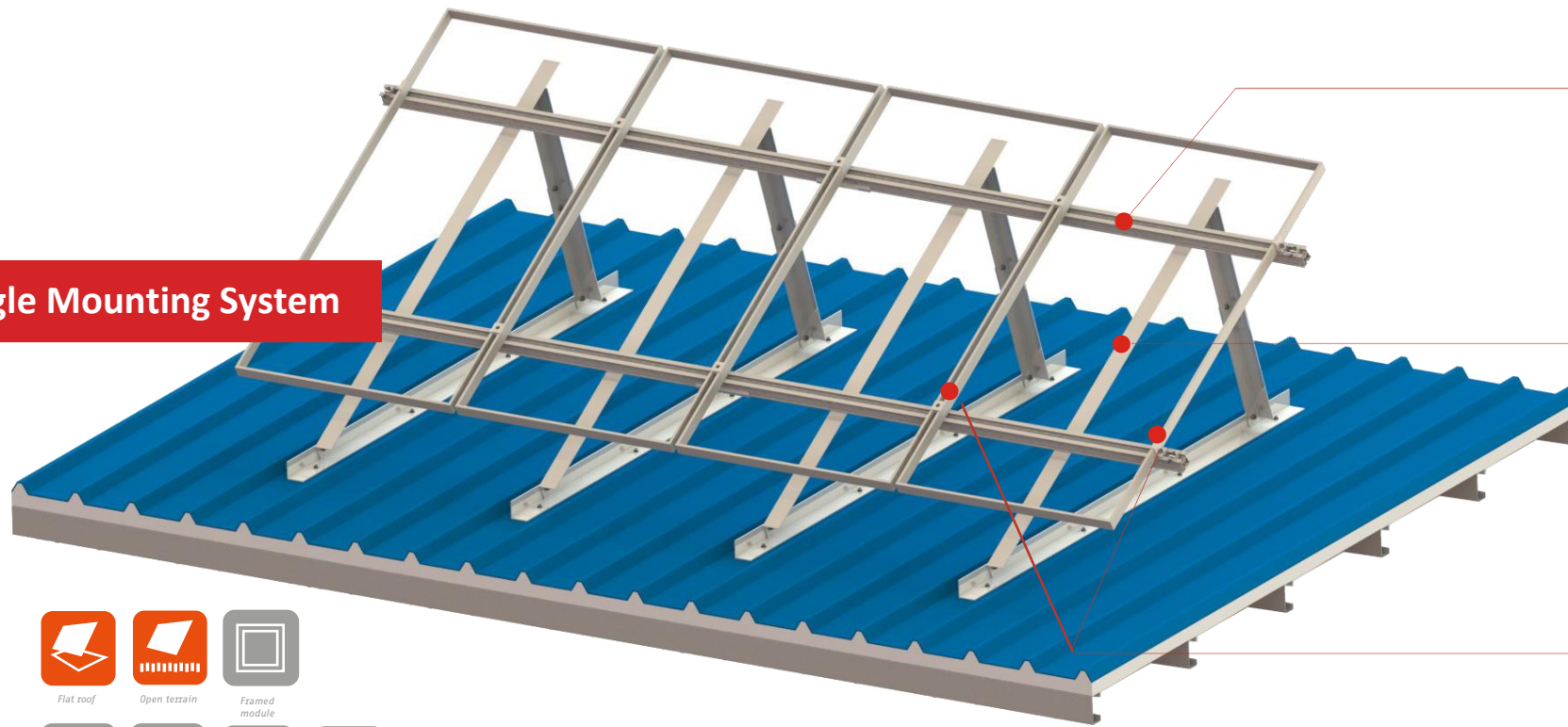


Triangle Mounting System



Technical Information

Installation Sit	Type	Tin Roof, Flat Roof
	Incline	0-60°
Wind and Snow Load	Wind Speed	$V \leq 60 \text{ m/s}$
	Build Height	$h \leq 30 \text{ m}$
	Snow Load	$P \leq 1.4 \text{ kN/m}^2$
Material	Material	Al6005-T5, SUS304
	Anti-corrosive	Anodized
Standard	AS/NZS 1170.2:2011 DIN 1055 JIS C 8955	
Warranty	Warranty	10 years warranty
	Duration	more than 20 years

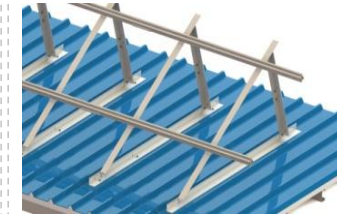
10
years
Warranty

Installation

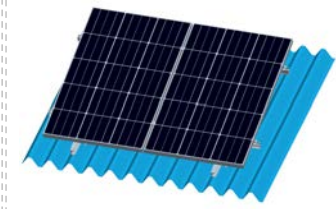
Step1. Fix triangle bracket on the roof by screws



Step2. Install mounting rail on triangle legs by L-feet



Step3. Fix the module on the rail by mid clamp and end clamp



※ fix the aluminum angle with the roof using the tapping screw